



EVOLUTION™ ELECTRIC E3-SERIES & E6-SERIES



PARTS MANUAL

ACCUTEMP PRODUCTS INC
11919 John Adams Dr. New Haven, IN 46774
www.accutemp.net Email: parts@accutemp.net
1-800-480-0415

 **WARNING**

The State of California enacted the California Safe Drinking Water and Toxic Enforcement Act of 1986, (Prop. 65), which “prohibits any person in the course of doing business from knowingly and intentionally exposing any individual to a chemical known to the State of California to cause cancer or reproductive toxicity without first giving clear and reasonable warning to such individuals.”

The Governor’s Scientific Advisory Panel added Carbon Monoxide to the list of hazardous chemicals known to cause reproductive harm.

In order to establish full compliance with Proposition 65, a yellow warning label has been attached to each gas fired unit manufactured by AccuTemp Products, Inc. Carbon monoxide would not be present in concentrations that would pose a “significant risk” to the consumer when the equipment is installed, operated and maintained as follows:

1. Installed in accordance with all local codes, or in the absence of local codes, with the current National Fuel Gas Code Z223.1, latest addenda.
2. Installed under a properly designed and operating exhaust hood.
3. Connected to the type of gas for which the unit is equipped.
4. Proper appliance pressure regulator installed on the gas supply line and adjusted for the manifold pressure marked on the rating plate.
5. Adequate air supply to the unit and adequate clearance around the flue.
6. The equipment is operated in the manner intended using the proper utensil for that type of appliance.
7. Keep the equipment clean and have it checked periodically.
8. Burner air adjustments, mechanical maintenance and repairs should be performed by qualified service personnel.

WARNING SYMBOL DEFINITIONS

SYMBOL DEFINITIONS

Symbols are used to attract your attention to possible dangers. They are only effective if the operator uses proper accident prevention measures. Some of the symbols are boxed text; while others maybe just picture icons. Please give this information the respect they deserve for safe operation.

Symbol Icons

Below are definitions of the symbol icons used in this manual.



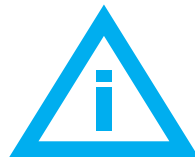
DANGER

Indicates an imminently hazardous situation; which, if unchanged, will result in death or serious injury.



CAUTION

Indicates a potentially hazardous situation; which, if unchanged, will result in minor or moderate injury.



NOTE

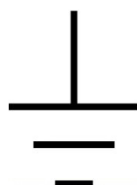
Advises the reader of information or instructions, vital to the operation or maintenance of the equipment.



CAUTION - HOT SURFACE



DANGEROUS VOLTAGE



EARTH GROUND

SAFETY PRECAUTIONS



ELECTRICAL SHOCK HAZARD WHILE WORKING ON ENERGIZED EQUIPMENT.

Unplug equipment prior to removing any components effected by electricity.

BURN HAZARD WHILE WORKING ON STEAM PRODUCING EQUIPMENT.

When accessing the cooking chamber, be sure to always stand back while slowly opening the door to allow the chamber to vent off the steam. Never reach into the cooking chamber before it has completely vented off the steam.

Never reach into the cooking chamber or handle hot items without wearing the proper heat protective gloves. Steam coming out of the holes on the right side of the cooking chamber is invisible and can cause severe burns.

Water inside the steam chamber, creating steam, has a temperature of 212°F and will cause burns if touched or spilled on the skin.

PERSONNEL INJURY HAZARD WHILE PICKING UP OR MOVING HEAVY EQUIPMENT.

Always use 2 people and proper lifting techniques when picking-up, moving, or inverting heavy equipment.

SLIP & FALL HAZARD WHILE WORKING ON WATER HOLDING EQUIPMENT.

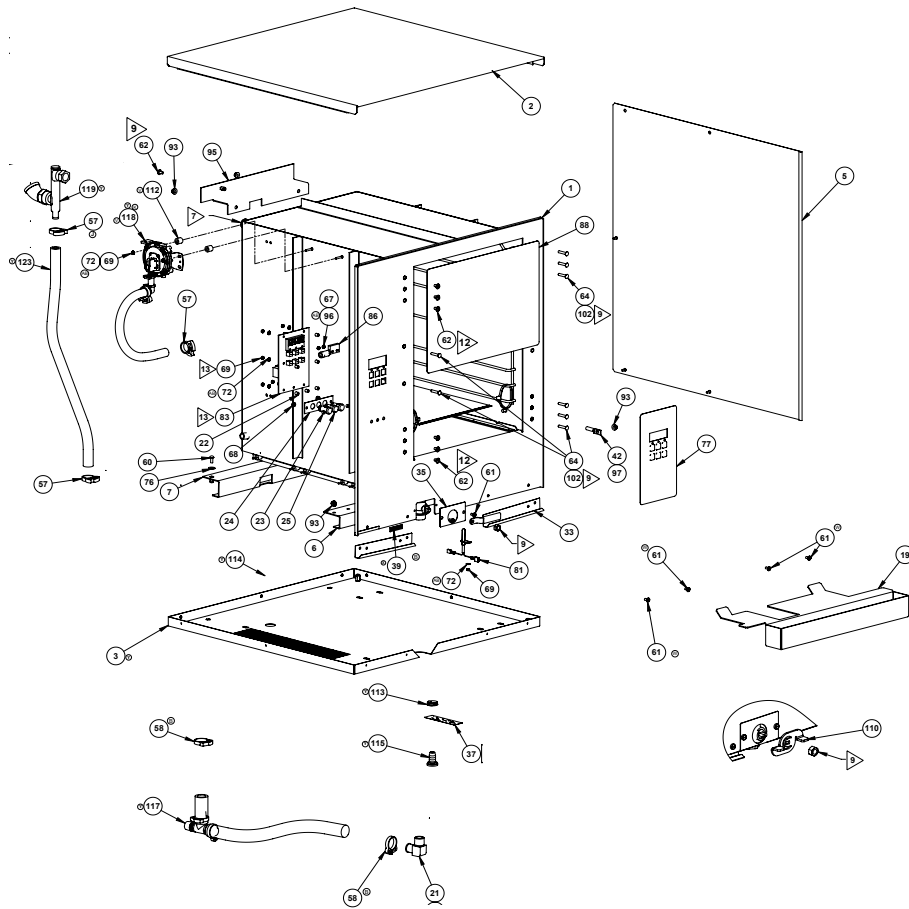
Keep the floor in front of the equipment clean and dry. If spills occur, clean them up immediately to avoid potential injuries.

Table of Contents

E3 = 3 Pan Evolution Electric Steamer E6 = 6 Pan Evolution Electric Steamer

- Fig: 1.0 E6 Steamer Common Components - Page 6 & 7
- Fig: 1.1 E6 Steamer Common Components - Page 8
- Fig: 1.2 E6 Steamer Common Components - Page 9
- Fig: 1.3 E6 Insulation Components - Page 10
- Fig: 1.4 E3 & E6 Cast Heater Components - Page 11
- Fig: 1.5 E3 & E6 Electrical Components - Page 12
- Fig: 1.6 E3 & E6 Electrical Components - Page 13 & 14
- Fig: 1.7 E6 Electrical Components E6 - Page 15
- Fig: 1.8 E3 & E6 Electrical Components - Page 16
- Fig: 1.9 E6 Steamer Door Components - Page 17
- Fig: 2.0 E3 & E6 Steamer Door Components - Page 18
- Fig: 2.1 E6 Steamer Door Components - Page 19
- Fig: 2.2 E6 Water Auto Fill SN 58692 & Down - Page 20
- Fig: 2.3 E3 & E6 Water Auto Fill SN 58693 & Up - Page 21
- Fig: 2.4 E6 Drain Hose Kit SN 58718 & Down - Page 22
- Fig: 2.5 E3 & E6 Drain Hose Kit SN 58719 & Up - Page 23
- Fig: 2.6 E3 Common Components (3 Pan Steamer) - Page 24 & 25
- Fig: 2.7 E3 Common Components (3 Pan Steamer) - Page 26
- Fig: 2.8 E3 Common Components (3 Pan Steamer) - Page 27
- Fig: 2.9 E3 Insulation Components (3 Pan Steamer) - Page 28
- Fig: 3.0 E3 Steamer Door Components (3 Pan Steamer) - Page 29
- Fig: 3.1 E3 & E6 Part Number Quick Reference List - Page 30

Fig 1.0 E6 Common Components



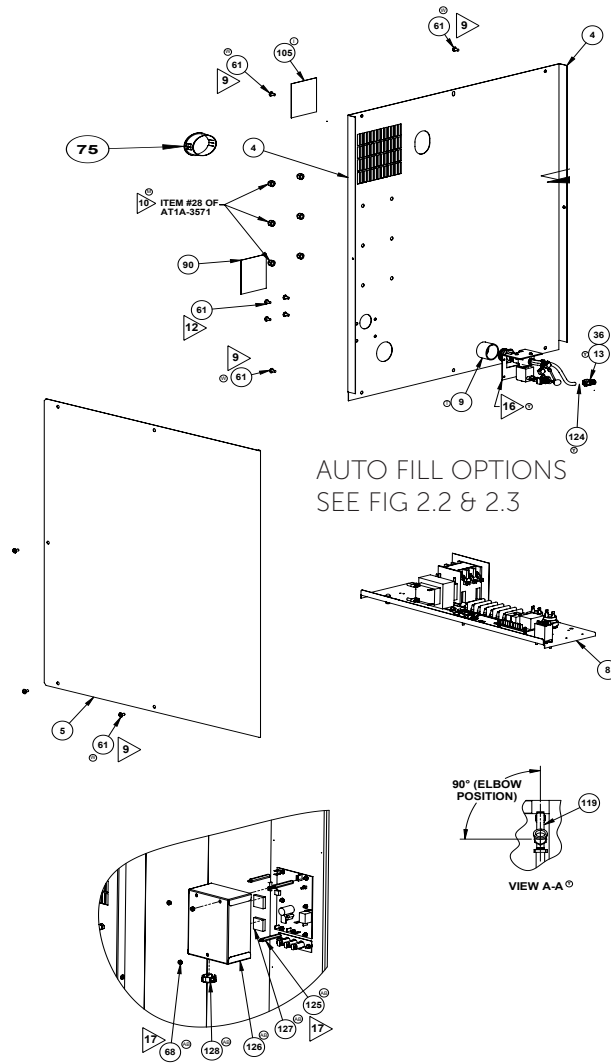
ITEM #	PART NUMBER	DESCRIPTION
#1	AT1A-3573-1	CHAMBER WELD ASSEMBLY
#2	AT1A-3629-1	ASSEMBLY, TOP PANEL
#3	AT1A-3596-1	PANEL, BOTTOM ASSEMBLY
#5	AT1M-3587-1	PANEL, SIDE
#6	AT1A-3610-2	HEATER MOUNTING BRKT ASSY
#7	AT1A-3610-1	HEATER MOUNTING BRKT ASSY
#19	AT1M-3521-2	TRAY, CONDENSATE
#21	ATOP-3481-1	ELBOW, 90° NPT TO BARB
#22	ATOH-3623-1	SPACER, ROUND CLEAR HOLE
#23	ATOH-3623-2	SPACER, ROUND CLEAR HOLE
#24	AT1M-3607-1	BRACKET, INDICATOR LAMP
#25	ATOE-1800-2	INDICATOR LAMP RED LED 28V
#33	AT1M-2573-3	DRIP EDGE
#33-1	AT1M-3797-1	FRONT DRIP PAN (4 SCREWS)
#35	AT1M-3348-1	COVER, STEAMER DRAIN
#36	ATOH-3102-1	PIPE THREAD SEALANT
#37	AT1L-2624-1	LABEL STEAMER LEGS
#39	AT1L-3369-1	LABEL, SERIAL NUMBER
#42	ATOE-3626-1	TEMPERATURE SENSOR, RTD
#57	ATOP-2714-5	HOSE CLAMP 1/2" ID
#58	ATOP-2714-3	HOSE CLAMP 3/4" ID
#60	ATOF-2755-41042	SCREW, #10-24UNC X 1/2
#61/#62	ATOF-1046-31030	SCREW, TRUSS #8-32 x 3/8
#61-1	ATOF-3448-31036	SCREW, SPAN HD#8-32 X 3/8
#62-2	ATOF-3448-31036	SCREW, SPAN HD#8-32 X 3/8
#64	ATOF-2061-41060	SCREW, #10-24 x 3/4" FLAT HD
#64-1	ATOF-3480-41080	SCREW, #10-24 x 1" TAMPER PROOF
#67	TOF-2778-11002	NUT, #4-40UNC-2B ZINC

Fig 1.0 E6 Common Components

ITEM #	PART NUMBER	DESCRIPTION
#69	AT0F-3621-1	NUT, #6-32UNC-2B
#72	AT0F-2666-21000	LOCKWASHER, SS #6
#76	AT0F-1052-41002	WASHER #10 PLAIN
#77	AT1L-3608-1	OVERLAY, CONTROL PANEL
#81	AT0A-3519-2	REED SWITCH WIRING HARNESS
#83	AT0E-3625-1-RXX	CONTROLLER, QUANTEM SERIES*
#86	AT0A-3660-1	SENSOR MAGNETIC PROXIMITY ASSY
#88	AT1L-3658-1	OVERLAY, OPERATING INSTRUCTIONS
#93	AT0F-1017-41002	NUT, #10-24UNC HEX SERRATED
#95	AT1A-3816-1	RACKET REAR SUPPORT ASSEMBLY
#96	AT0F-2666-10000	LOCKWASHER, SS #4
#97	AT0H-3412-1	THERMAL JOINT COMPOUND
#102	AT0H-3065-3	THREAD LOCKER 248
#110	AT1M-3869-1	HANDLE, BALL VALVE
#112	AT1P-2555-32002	HOSE 1/4 ID X 1/2 OD X .50 LG
#113	AT0H-2576-5	GROMMET, 7/8" NYLON
#114	AT0P-5180-1	HOSE BARB 3/4" TO 1/2", REDUCTION CPL
#115	AT0P-5179-1	HOSE BARB 1/2", FLAT SEAT
#117	AT1A-3809-X	DRAIN HOSE KITS (SEE FIG 2.4 & 2.5)
#118	AT1A-5195-1	PRESSURE SWITCH SUBASSY
#118-1	AT0E-3617-4	AIR PRESSURE SWITCH S/N 35062 & UP
#119	AT1A-5191-1	VENT ASSEMBLE, STEAMER
#119-1	AT1A-5093-1	VENT ASSY
#119-2	AT0P-3811-1	ELBOW, 45 DEGREE STREET 3/4 NPT
#119-3	AT0A-4534-1	STEAM VENT EXTENSION (NOT SHOWN)
#123	AT0P-3833-63000	1/2" HOSE, SILICONE (SOLD PER FT)

*PLEASE CONTACT OUR SERVICE PARTS DEPARTMENT FOR THE MOST CURRENT
CONTROLLER SERIES AT0E-3625-1-RXX AT
1-800-480-0415 OR EMAIL parts@accutemp.net

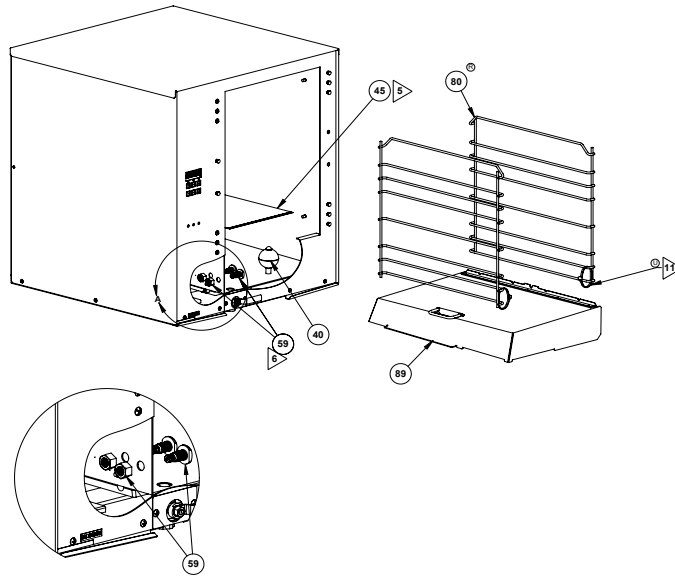
Fig 1.1 E6 Common Components



AUTO FILL OPTIONS
SEE FIG 2.2 & 2.3

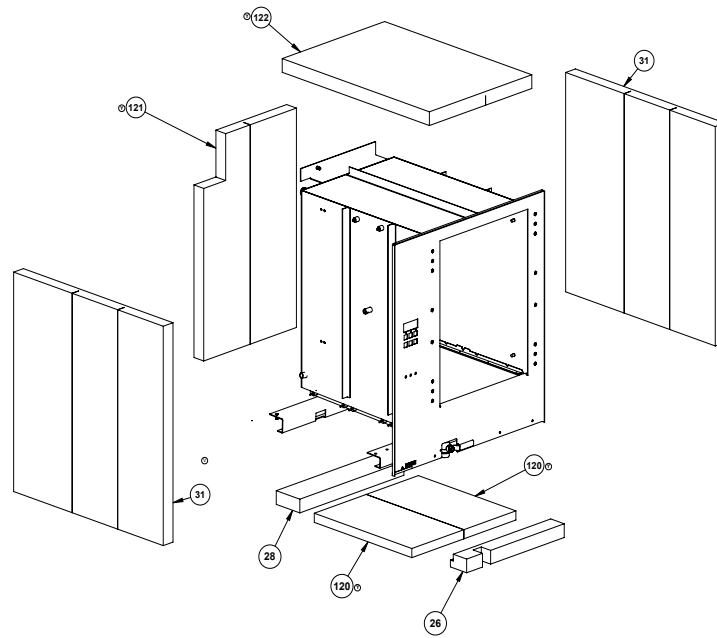
ITEM #	PART NUMBER	DESCRIPTION
#4	AT1M-3588-1	PANEL, BACK
#4-1	AT1M-3588-15	PANEL, BACK (AT1A-3572-5)
#5	AT1M-3587-1	PANEL, SIDE
#8	AT1A-3590-1	COMPONENT BRACKET ASSY
#9	ATOP-4293-1	CAP, PIPE
#13	ATOP-3495-3	MALE CONNECTOR, 1/4" TUBE TO 1/8" NPTM
#36	ATOH-3102-1	PIPE THREAD SEALANT
#61	ATOF-1046-31030	SCREW, #8-32 x 3/8 PHLP TRUSS HEAD
#61-1	ATOF-3448-31036	SCREW, #8-32 X 3/8" TAMPER PROOF
#68	ATOF-2691-21002	NUT, #6-32 NYLOC
#75	ATOH-3643-1	PLUG, DOME 1.25 DIA
#90	AT1L-3665-1	LABEL, WATER BACKFLOW
#105	AT1L-3665-2	LABEL, STEAM EXHAUST VENT
#119	AT1A-5191-1	VENT ASSEMBLY, STEAMER
#119-1	AT1A-5093-1	VENT ASSY
#119-2	ATOP-3811-1	ELBOW, 45 DEGREE STREET 3/4 NPT
#124	ATOP-5194-1	SUPPORT, TUBE
#125	ATOF-6340-1	STANDOFF, HEX FEMALE TO MALE - 6-32
#126	AT1A-6282-2	COVER ASSY, QUANTEM BOARD - STD
#127	ATOH-6283-1	CORROSION INHIBITOR EMITTER
#128	ATOH-6280-1	SNAP BUSHING, SPLIT FLAP - 1.00"

Fig 1.2 E6 Common Components



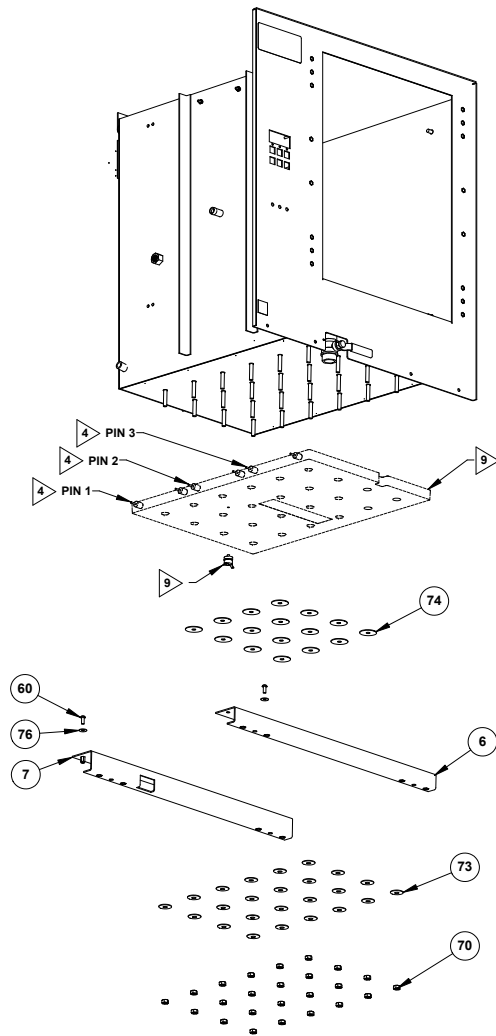
ITEM #	PART NUMBER	DESCRIPTION
#40	AT0P-3233-1	FLOAT BALL, ROUND
#45	AT1A-3387-2	OWNER'S MANUAL & REGISTRATION FORM
#59	AT1E-2652-1	PROBE; WATER SENSOR
#80	AT1A-3601-6	WIRE RACK, STANDARD
#80-1	AT1A-3601-4	WIRE RACK, HEAVY DUTY
#89	AT1A-3663-1	STEAM COLLECTOR ASSY
#89-1	AT1A-3663-2	STEAM COLLECTOR ASSY, TIG

Fig 1.3 E6 Insulation Components



ITEM #	PART NUMBER	DESCRIPTION
#26	AT1I-2866-24	INSULATION, BOTTOM FRONT
#28	AT1I-2866-26	INSULATION, BOTTOM BACK
#31	AT1I-2866-23	INSULATION, RH & LH SIDE
#120	AT1I-2866-64	INSULATION, BOTTOM CENTER
#121	AT1I-2866-71	INSULATION, BACK WALL
#122	AT1I-2866-71	INSULATION, TOP

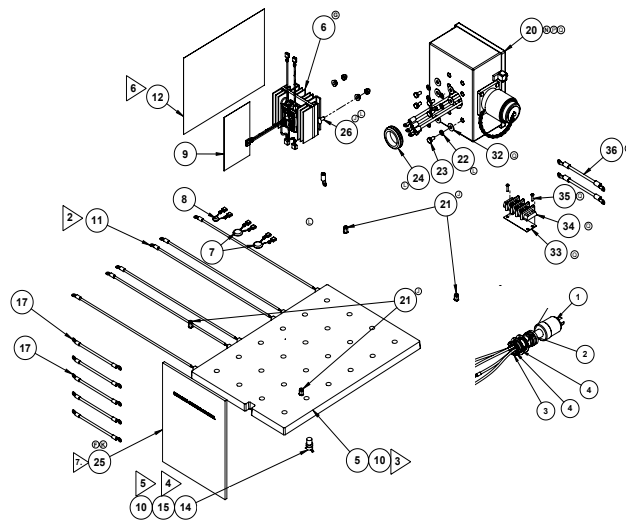
Fig 1.4 E3 & E6 Cast Heater Components



ITEM #	PART NUMBER	DESCRIPTION
#6	AT1A-3610-2	HEATER MOUNTING BRACKET ASSY
#7	AT1A-3610-1	HEATER MOUNTING BRACKET ASSY
#9	AT1A-3530-X	CAST HEATER KIT*
#9-1	AT1E-2653-3	OVER TEMP LIMIT SWITCH 13KW & LOWER
#9-2	AT1E-2653-4	OVER TEMP LIMIT SWITCH 14KW & HIGHER
#60	AT0F-2755-41042	SCREW, #10-24UNC X 1/2 PHILIPS
#70	AT0F-3401-1	NUT, SPECIAL LOCKING 1/4-20UNC-2B (QTY: 24)
#73	AT0F-2663-4	WASHER, Ø.687 OD BELLEVILLE (QTY: 24)
#74	AT0F-3405-1	WASHER, ROUND FLAT (QTY: 16)
#76	AT0F-1052-41002	WASHER #10 TYPE B PLAIN

*PLEASE CONTACT OUR SERVICE PARTS DEPARTMENT FOR ALL ELECTRIC CAST HEATER KIT OPTIONS AT
1-800-480-0415 OR EMAIL parts@accutemp.net

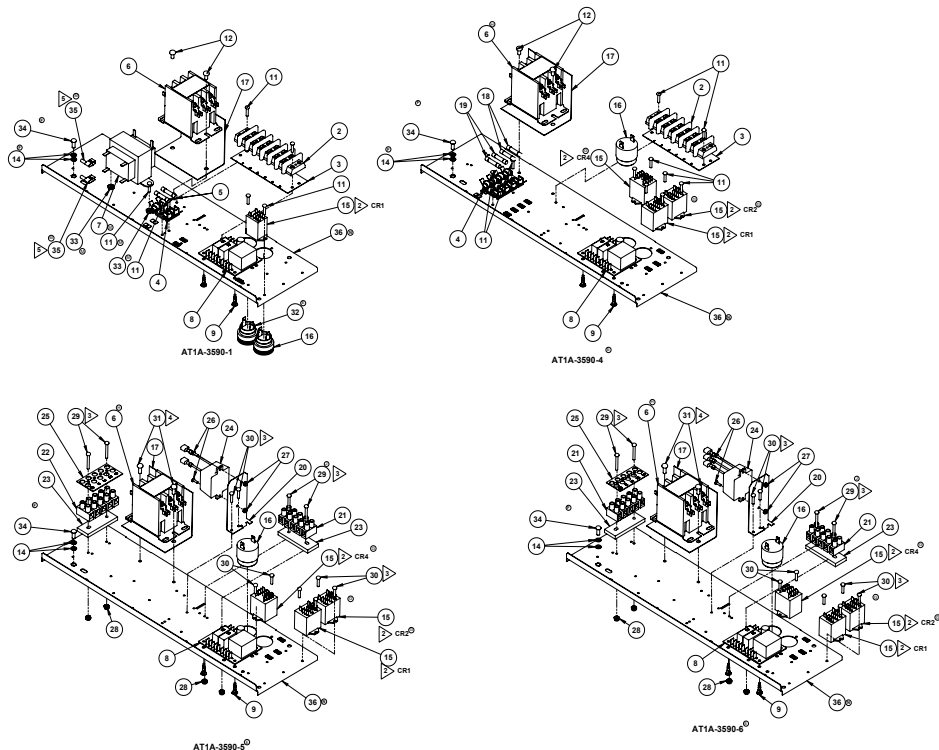
Fig 1.5 E3 & E6 Electrical Components



ITEM #	PART NUMBER	DESCRIPTION
#1	AT0A-2788-XX	POWER CABLE ASSY*
#2	AT0E-1049-4	STRAIN RELIEF 1" HUB
#2-1	AT0E-1049-6	STRAIN RELIEF 1-1/4"
#3	AT0E-2086-3	CORD GRIP LOCKNUT
#3-1	AT0E-2086-4	CORD GRIP LOCKNUT
#4	AT0H-3641-1	WASHER 1-1/4 X 1 REDUCING
#4-1	AT0H-3641-2	WASHER 1-1/4 X 3/4 REDUCING
#4-2	AT0H-3641-4	WASHER 1-1/2 X 1-1/4 REDUCING
#5	AT1E-3361-X	CAST ALUM HEATER ASSY*
#6	AT1A-3707-1	HEAT SINK ASSY, SINGLE SSR
#7	AT0A-2736-2	MOV-TERMINAL ASSY
#8	AT0A-2736-8	MOV-TERMINAL ASSY
#9	AT1L-3116-3	TAG; STEAMER DATA
#10	AT0H-3412-1	THERMAL JOINT COMPOUND
#11	AT0E-2680-5	RING TERMINAL INSULATED #10 STUD
#12	AT1T-3595-2	SCHEMATIC. STEAMER, ATMOSPHERIC
#12-1	AT1T-3595-1	SCHEMATIC. STEAMER, ATMOSPHERIC
#13	AT1A-3667-X	DISTRIBUTION PANEL ASSY
#14	AT1E-2653-X	OVERTEMP SWITCH*
#15	AT0H-3065-3	THREAD LOCKER 248
#16	AT1A-3605-2	STEAMER WIRING HARNESS
#17	AT1A-3605-3	STEAMER WIRING HARNESS
#17-1	AT1A-3605-4	STEAMER WIRING HARNESS
#20	AT0A-6269-1	POWER PACK ASSY
#21	AT0F-2668-2	NUTSERT, . 1/4-20 HEX
#22	AT0F-1922-50000	WASHER, 1/4 HELICAL SPRING LOCK
#23	AT0F-2875-51041	SCREW, 1/4-20UNC X 1/2 HEX HEAD
#24	AT0H-3150-2	GROMMET, RUBBER
#26	AT0F-1921-51051	BOLT, 316SS 1/4-20UNC 2A X 5/8 CARRIAGE

* -X OR -XX PART NUMBERS CONTACT ACCUTEMP PRODUCTS FOR CORRECT P/N AT 1-800-480-0415 OR EMAIL parts@accutemp.net

Fig 1.6 E3 & E6 Electrical Components



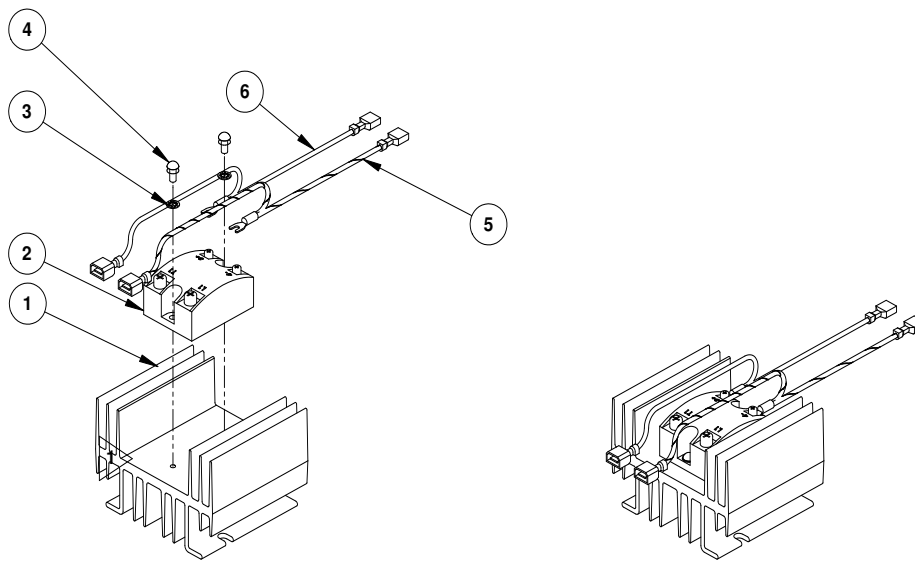
ITEM #	PART NUMBER	DESCRIPTION
#2	ATOE-1134-6	6 POSITION TERMINAL BLOCK
#3	ATOE-3062-3	MARKER STRIP BARRIER BLOCK 6 POS
#4	ATOE-2708-1	3AG OMNI-BLOK FUSE BLOCK 2 POS
#4-1	ATOE-2708-2	3AG OMNI-BLOK FUSE BLOCK 4 POS
#5	ATOE-2731-2	FUSE 1¼ AMP 250V
#6	ATOE-1587-6	3 POLE CONTACTOR
#7	ATOE-2662-7	TRANSFORMER
#8	ATOE-3230-2	EVO, WATER LEVEL CONTROLLER
#9	ATOH-3407-1	C B SUPPORT, REVERSE MT'G
#11	ATOF-3620-21052	SCREW, #6-32UNC X 5/8" PHILLIPS PAN HEAD
#12	ATOF-3620-40032	SCREW, #10-32UNF X 3/8" PHILLIPS PAN HEAD
#14	ATOF-2666-40000	WASHER, SS #10 INTERNAL TOOTH LOCK
#15	ATOE-2825-5	AC CONTROL RELAY 24VAC
#15-1	ATOE-2825-6	DC CONTROL RELAY
#16	ATOE-3654-1	DC ALARM, ELECTRIC (CONTROL BOARD)
#17	AT1M-3734-1	SHIELD, CONTACTOR
#18	ATOE-2731-1	FUSE 3 AMP 250V
#19	ATOE-3162-1	FUSE ½ AMP 250V
#20	AT1M-3438-1	BRACKET, EMI MOUNTING
#21	ATOE-3453-1	TERMINAL BLOCK, 5-POSITION 32A
#22	ATOE-3453-2	TERMINAL BLOCK, 5-POSITION 40A
#23	ATOE-3482-1	SPACER, TERMINAL BLOCK
#24	ATOA-3702-1	ASSEMBLY, EMI FILTER
#24-1	ATOA-3702-2	ASSEMBLY, EMI FILTER
#25	ATOL-3454-1	LABEL, TERM BLOCK
#25-1	ATOL-3454-2	LABEL, TERM BLOCK
#26	ATOF-1046-11030	SCREW, #4-40 x 3/8 CROSS RECESSED TRUSS HD
#27	ATOF-2691-11000	NUT, #4-40 NYLOC
#28	ATOF-2691-21001	NUT, #6-32 NYLOC
#29	ATOF-3693-21090	SCREW, #6-32UNC X 1 1/8" PHILLIPS PAN HD

Fig 1.6 E3 & E6 Electrical Components

ITEM #	PART NUMBER	DESCRIPTION
#30	AT0F-3693-21050	SCREW, #6-32UNC X 5/8" PHILLIPS PAN HD
#31	AT0F-3693-40040	SCREW, #10-32UNF X 1/2" PHILLIPS PAN HD
#32	AT0E-3654-2	AC ALARM, ELECTRIC (WATER BOARD)
#33	AT0F-2778-41001	NUT, #10-24UNC-2B SS HEX SCREW
#34	AT0F-2755-41040	SCREW, #10-24UNC X 1/2 PHILIPS RD HD
#35	AT0E-4984-1	TERMINAL, FLAG 18-22 AWG .187 X .032 TAB
#36	AT1A-6243-1	ASSY, BRACKET, COMPONENT

Fig 1.7 E6 Electrical Components

For all E6 Steamers S/N: 65454 & Down

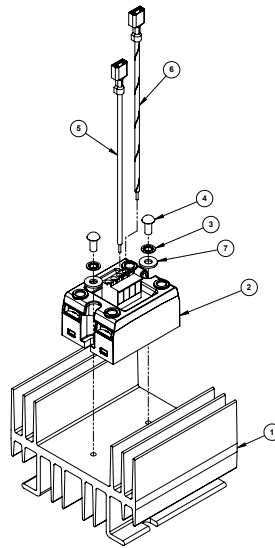


AT1A-3707-1

ITEM #	PART NUMBER	DESCRIPTION
#1	AT0E-2206-3	HEAT SINK, 3.47" LONG
#2	AT0E-2059-3	RELAY, SOLID STATE
#3	AT0F-2666-30000	WASHER, #8 INTERNAL TOOTH LOCK
#4	AT0F-2755-31030	SCREW, #8-32 UNC X 3/8 PHILPS
#5	AT0A-1454-14	WIRE HARNESS ASSY, ORANGE
#6	AT0A-1454-14	WIRE HARNESS ASSY, WHT/BRN

Fig 1.8 E3 & E6 Electrical Components

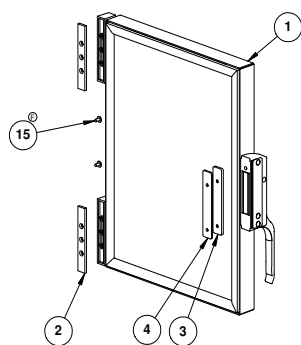
For all E3 Steamers & E6 Steamers S/N: 65455 & UP



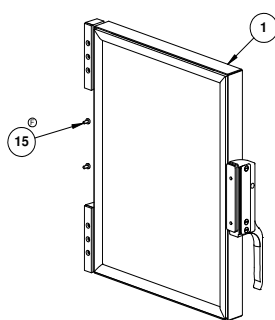
AT0A-6262-1

ITEM #	PART NUMBER	DESCRIPTION
#1	ATOE-2206-3	HEAT SINK, 3.47" LONG
#2	ATOE-6259-1	RELAY, DUAL POLE SOLID STATE
#3	ATOF-2666-30000	WASHER, #8 INTERNAL TOOTH LOCK
#4	ATOF-2755-31030	SCREW, #8-32 UNC X 3/8 PHILPS
#5	ATOA-6276-1	WIRE HARNESS ASSY, ORANGE
#6	ATOA-6276-2	WIRE HARNESS ASSY, WHT/BRN
#7	ATOF-1052-33000	WASHER, #8 FLAT

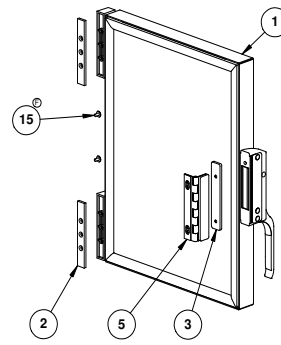
Fig 1.9 E6 Door Components



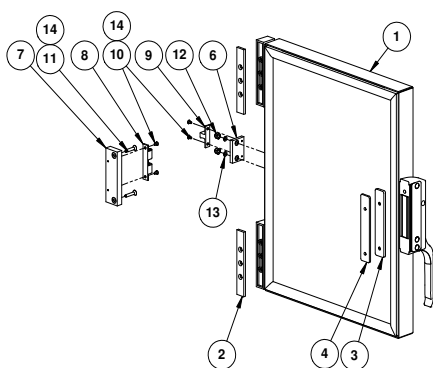
AT1A-3600-1



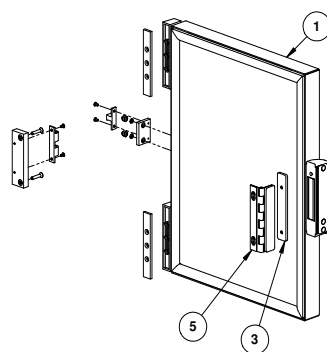
AT1A-3600-2
OTHERWISE SAME AS AT1A-3600-1



AT1A-3600-4



AT1A-3600-3

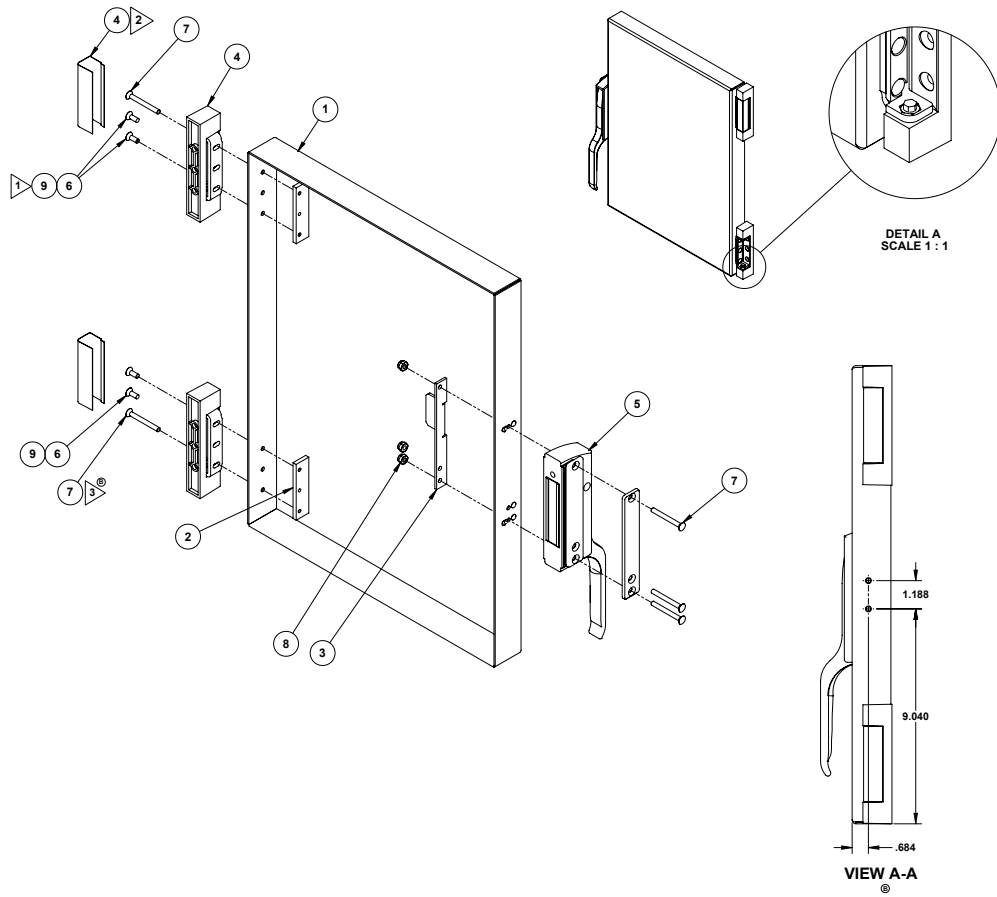


AT1A-3600-5
OTHERWISE SAME AS AT1A-3600-3

ITEM #	PART NUMBER	DESCRIPTION
#1	AT1A-3645-X	DOOR ASSEMBLY*
#1-1	AT1G-2633-1	GASKET; DOOR
#1-2	AT1A-3647-1	INNER DOOR ASSY W/ GASKET
#1-3	AT1H-3609-1	EVOLUTION DOOR HANDLE ASSY
#1-4	ATOF-2061-41140	SCREWS, DOOR HANDLE 10-24 x 1-3/4"
#1-5	ATOF-2691-41011	LOCKNUTS, DOOR HANDLE 10-24
#1-6	AT1L-3658-1	DOOR DECAL
#2	AT1M-3655-1	SPACER HINGE
#3	AT1H-3609-H	LATCH - STRIKE
#4	AT1H-3609-J	LATCH - SPACER
#5	AT1A-3442-1	CRACK OPEN HINGE ASSEMBLY
#6	AT1M-3671-1	PLATE, HOLD OPEN DOOR
#7	AT1M-3670-1	PLATE, HOLD OPEN FRONT
#8	ATOH-3443-2	CATCH, BALL-STYLE GRAB
#9	ATOH-3443-3	CATCH, BALL-STYLE GRAB
#10	ATOF-2061-21020	SCREW, 6-32 X 1/4" FLAT HEAD MACHINE
#11	ATOF-2061-41080	SCREW, 10-24 x 1" FLAT HD MACHINE
#12	ATOF-2632-41001	NUT, 10-24 ACORN
#13	ATOF-1922-40000	WASHER, 10 SS HELICAL SPRING LOCK
#14	ATOH-3065-3	THREAD LOCKER 248
#15	ATOF-1046-41030	SCREW, 10-24 x 3/8 PHLP TRUSS HEAD
#15-1	ATOF-3448-41036	SCREW, 10-24x3/8" TAMPER PROOF

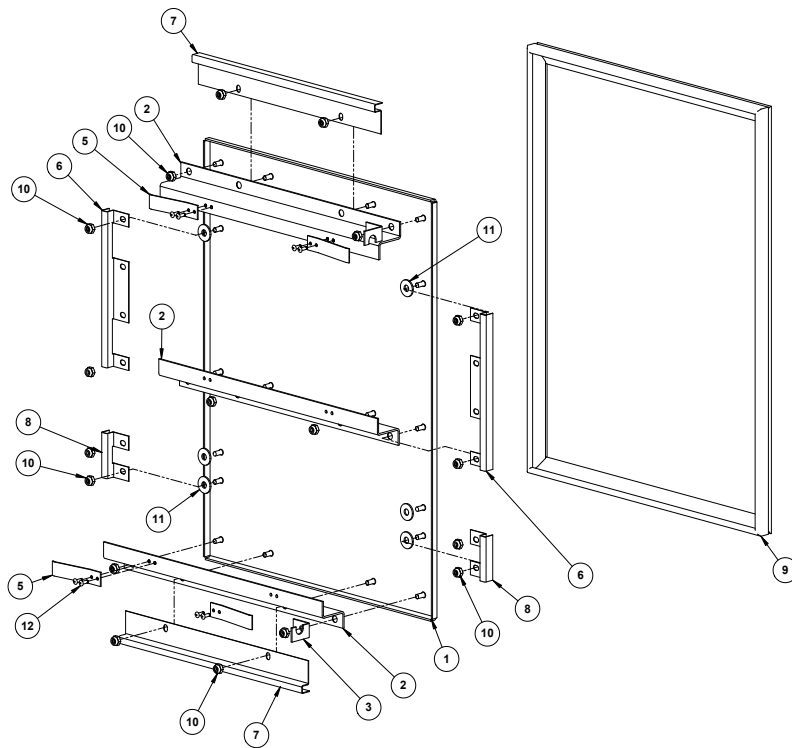
* PLEASE CALL SERVICE PARTS DEPT FOR CORRECT DOOR CONFIGURATION AT 1-800-480-0415 OR EMAIL parts@accutemp.net

Fig 2.0 E3 & E6 Door Components



ITEM #	PART NUMBER	DESCRIPTION
#1	AT1M-3648-1	OUTER DOOR PANEL
#2	AT1M-2689-1	HINGE MOUNTING PLATE
#3	AT1M-3046-1	LATCH MOUNTING PLATE RIGHT HAND
#4	AT1H-2058-3	HINGE, STEAMER DOOR (PAIR)
#5	AT1H-3609-1	LATCH HANDLE ASSEMBLY
#6	ATOF-2061-41060	SCREW, 10-24 x 3/4" FLAT HD MACHINE
#6-1	ATOF-3480-41066	SCREW, 10-24 x 3/4" TAMPER PROOF
#7	ATOF-2061-41140	SCREW, 10-24 x 1 3/4" FLAT HD MACHINE
#7-1	ATOF-3480-41166	SCREW, #10-24 x 2" TAMPER PROOF
#8	ATOF-2691-41011	NUT, 10-24 WAXED NYLOC
#9	ATOH-3065-3	THREAD LOCKER 248
#10	ATOF-1016-41040	10-24 x 1/2 FL STUD THD

Fig 2.1 E6 Door Components

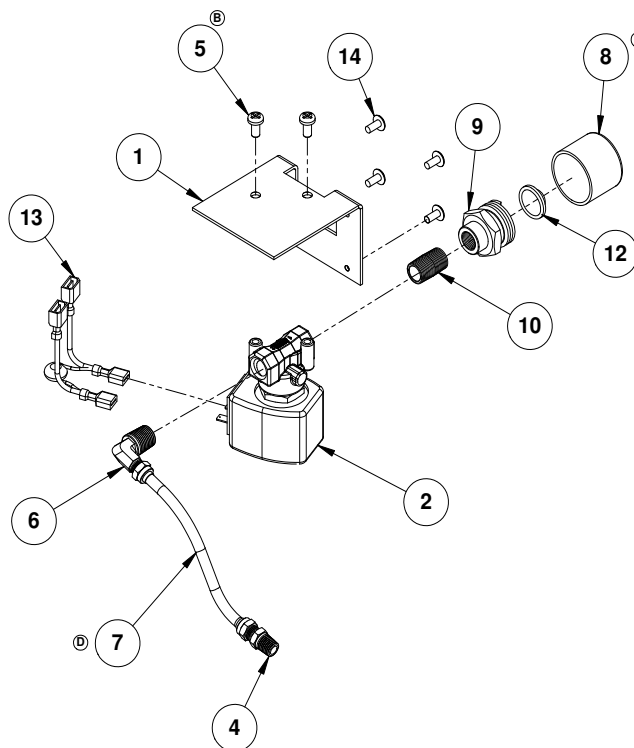


AT1A-3647-1 INNER DOOR ASSY

ITEM #	PART NUMBER	DESCRIPTION
#1	AT1A-3649-1	PANEL, INNER DOOR WELDMENT
#2	AT1M-3651-1 Z	BRACKET, INNER DOOR
#3	AT1M-3466-1	BRACKET, DOOR
#4	AT1M-3466-2	BRACKET, DOOR
#5	AT1M-3653-1	SPRING, INNER DOOR
#6	AT1M-3524-1	RETAINER, SIDE DOOR GASKET
#7	AT1M-3652-1	RETAINER, DOOR GASKET
#8	AT1M-3507-1	RETAINER, SIDE SMALL DOOR GASKET
#9	AT1G-2633-1	INNER DOOR GASKET (6 PAN)
#10	ATOF-2691-41011	NUT, #10-24 WAXED NYLOC
#11	ATOF-1052-51000	WASHER 1/4 TYPE B PLAIN
#12	ATOF-3368-2	BLIND RIVET

Fig 2.2 E6 Auto Water Fill S/N 58694 & Down

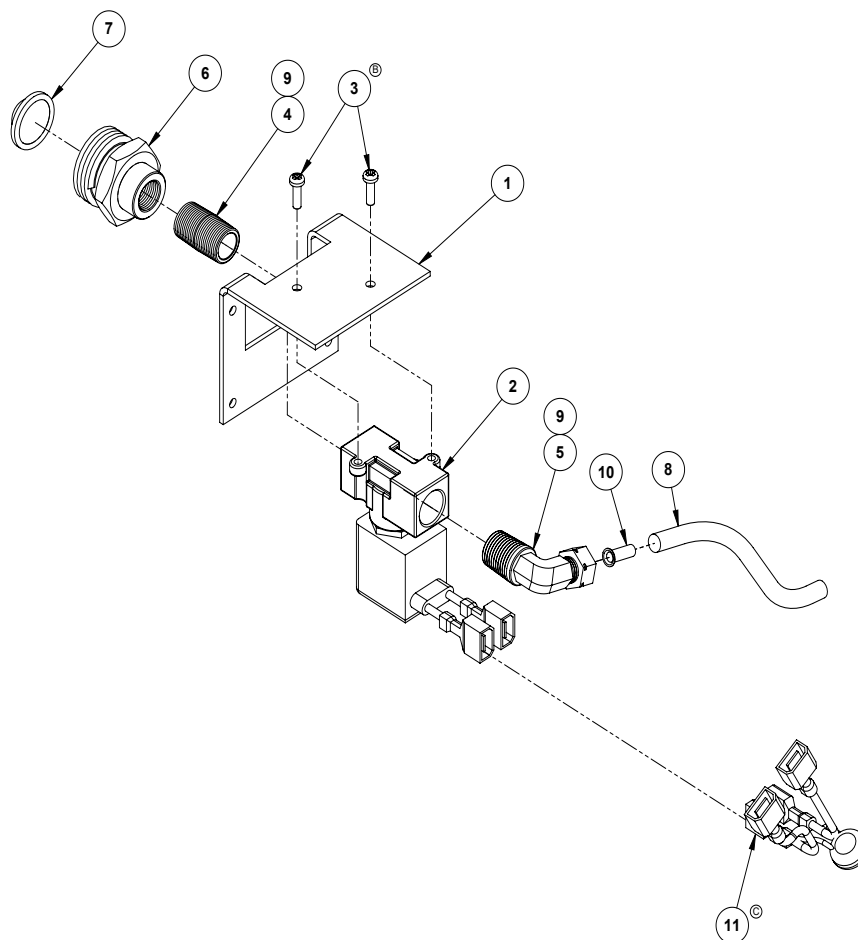
AT1A-3841-1



ITEM #	PART NUMBER	DESCRIPTION
#1	AT1M-3510-1	BRACKET, WATER CONTROL VALVE
#2	ATOP-3509-2	SOLENOID VALVE 1/4"- 24VAC
#3	ATOH-3102-1	PIPE THREAD SEALANT
#4	ATOP-3495-2	MALE CONNECTOR-1/4" TUBE TO 1/8" NPTM
#5	ATOF-3927-71055	SCREW, M5 x .8 x 10 PHLP PAN HD
#6	ATOP-3518-1	MALE ELBOW, 1/4" TUBE TO 1/4" NPTM
#7	AT1P-2555-32000	1/4" SILCONE HOSE (SOLD PER FOOT)
#8	ATOP-4293-1	CAP, PIPE
#9	ATOP-3430-1	FITTING, GARDEN HOSE TO NTPF
#10	ATOP-3512-12000	NIPPLE, CLOSE, BRASS 1/4" NPT
#12	ATOP-3499-1	FILTER, INLET
#13	ATOA-2736-9	MOV-TERMINALS ASSY 36V
#14	ATOF-1046-31030	SCREW, 8-32 x 3/8" PHLP TRUSS END

Fig 2.3 E3 & E6 Auto Water Fill S/N 58695 & Up

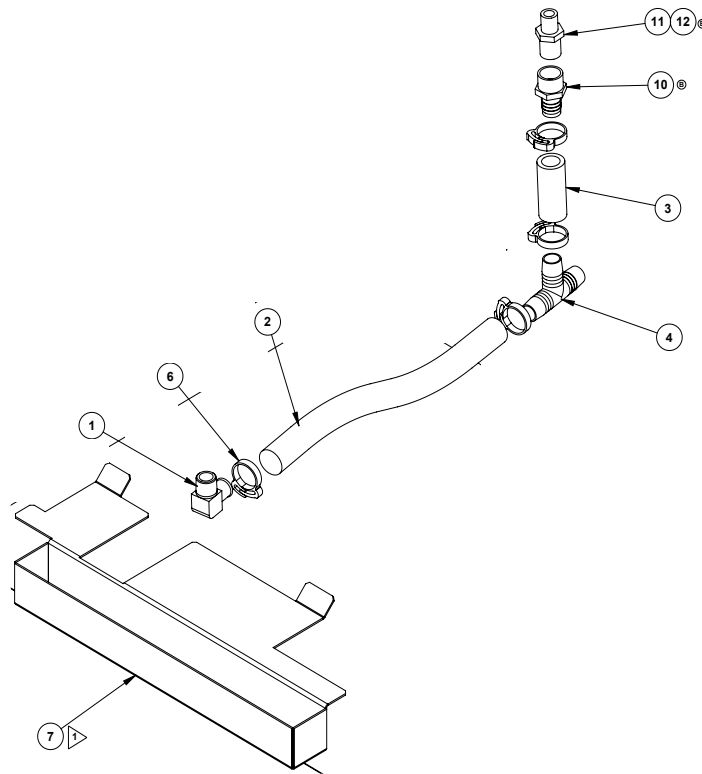
AT1A-5220-1



ITEM #	PART NUMBER	DESCRIPTION
#1	AT1M-3510-2	BRACKET, WATER CONTROL VALVE
#2	AT1A-5185-1	SOLENOID VALVE 24V/60Hz
#3	ATOF-3927-31050	SCREW, M3 x .5 x 10 PHLP PAN HD
#4	ATOP-3512-12000	NIPPLE, CLOSE, BRASS - 1/4" NPT
#5	ATOP-3518-3	MALE ELBOW, 1/4" TUBE TO 1/4" NPTM
#6	ATOP-3430-1	FITTING, GARDEN HOSE TO NTPF
#7	ATOP-3499-1	FILTER. INLET
#8	AT1P-2555-32000	1/4" SILCONE HOSE (SOLD PER FOOT)
#9	ATOH-3102-1	PIPE THREAD SEALANT
#10	ATOP-5194-1	SUPPORT, TUBE
#11	ATOA-2736-9	MOV-TERMINALS ASSY 36V

Fig 2.4 E6 Drain Kits S/N 58718 & Down

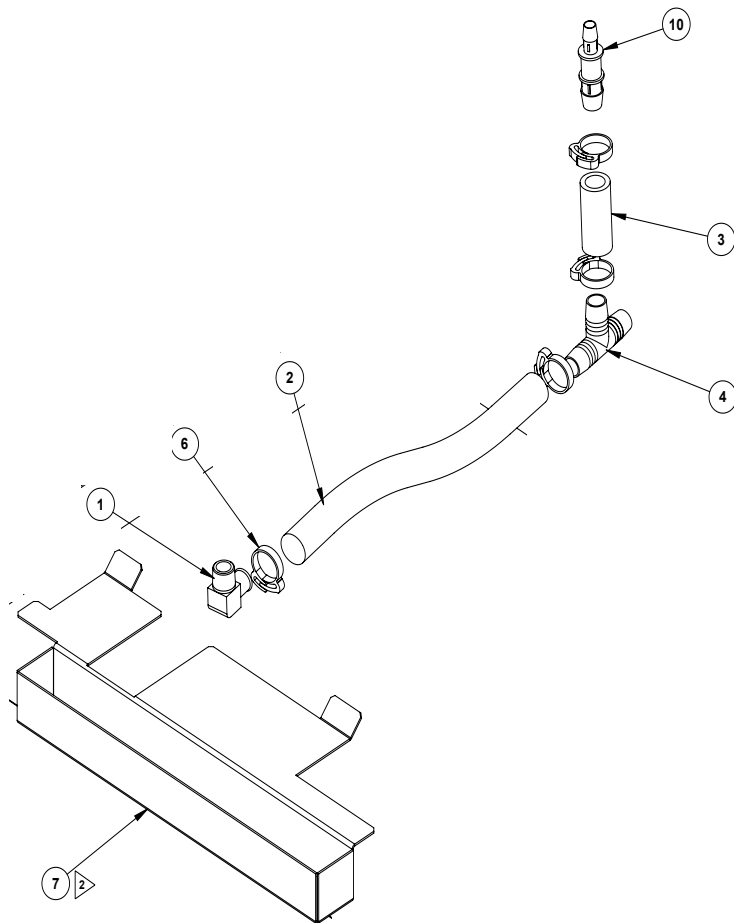
AT1A-3809-1 & AT1A-3809-2



ITEM #	PART NUMBER	DESCRIPTION
#1	AT10P-3481-1	ELBOW, 90 DEG NPT TO BEADED HOSE BARB
#2	ATOP-3477-83000	3/4" BLUE DRAIN HOSE (SOLD PER FOOT)
#3	ATOP-3477-83000	3/4" BLUE DRAIN HOSE (SOLD PER FOOT)
#4	ATOP-2987-3	BARBED TEE FITTING 3/4" x 3/4" x 3/4"
#6	ATOP-2714-3	HOSE CLAMP 3/4"
#7	AT1M-3521-2	TRAY, CONDENSATE (AT1A-3809-1 ONLY)
#10	ATOP-5216-1	HOSE BARB, 1/2" FNPT x 3/4"
#11	ATOP-5217-1	NIPPLE, 1/2" x 3/8" NPT REDUCING
#12	ATOH-3102-1	PIPE THREAD SEALANT

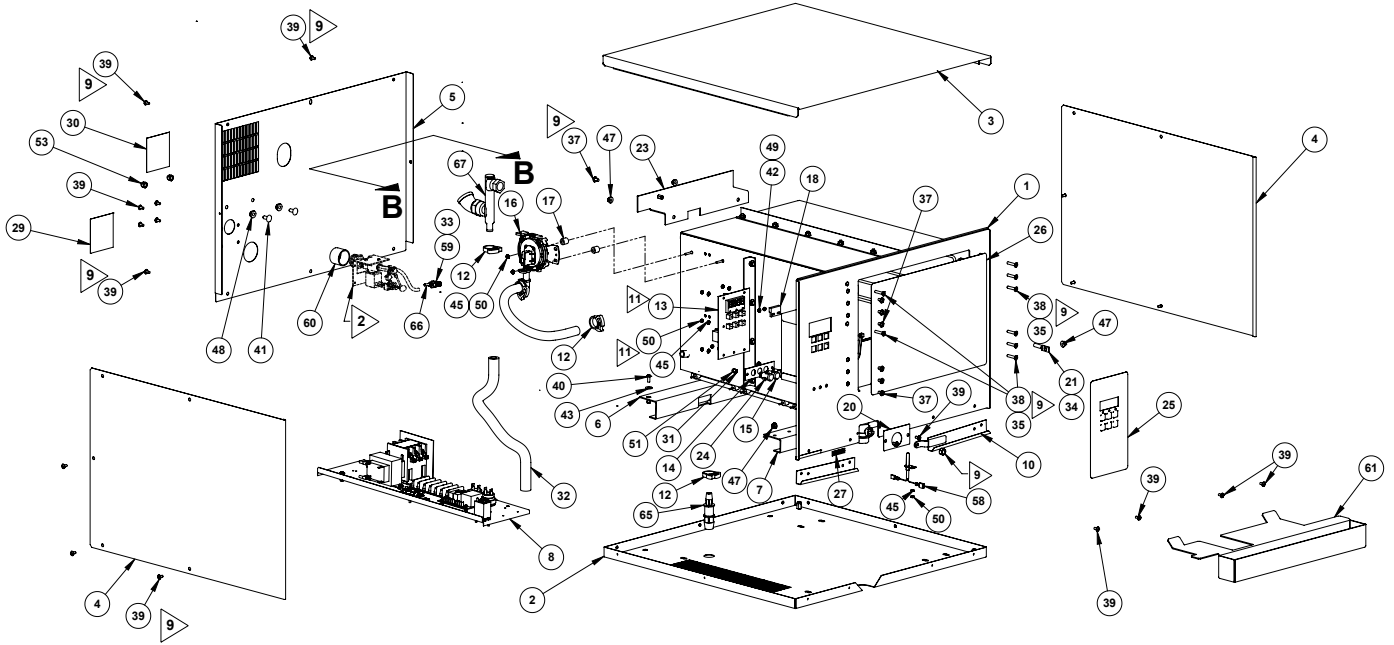
Fig 2.5 E3 & E6 Drain Kits S/N 58719 & Up

AT1A-3809-3 & AT1A-3809-4



ITEM #	PART NUMBER	DESCRIPTION
#1	AT10P-3481-1	ELBOW, 90 DEG NPT TO BEADED HOSE BARB
#2	ATOP-3477-83000	3/4" BLUE DRAIN HOSE (SOLD PER FOOT)
#3	ATOP-3477-83000	3/4" BLUE DRAIN HOSE (SOLD PER FOOT)
#4	ATOP-2987-3	BARBED TEE FITTING 3/4" x 3/4" x 3/4"
#6	ATOP-2714-3	HOSE CLAMP 3/4"
#7	AT1M-3521-2	TRAY, CONDENSATE (AT1A-3809-3 ONLY)
#10	ATOP-5180-1	HOSE BARB 3/4" TO 1/2", REDUCTION COUPLER

Fig 2.6 E3 Common Components



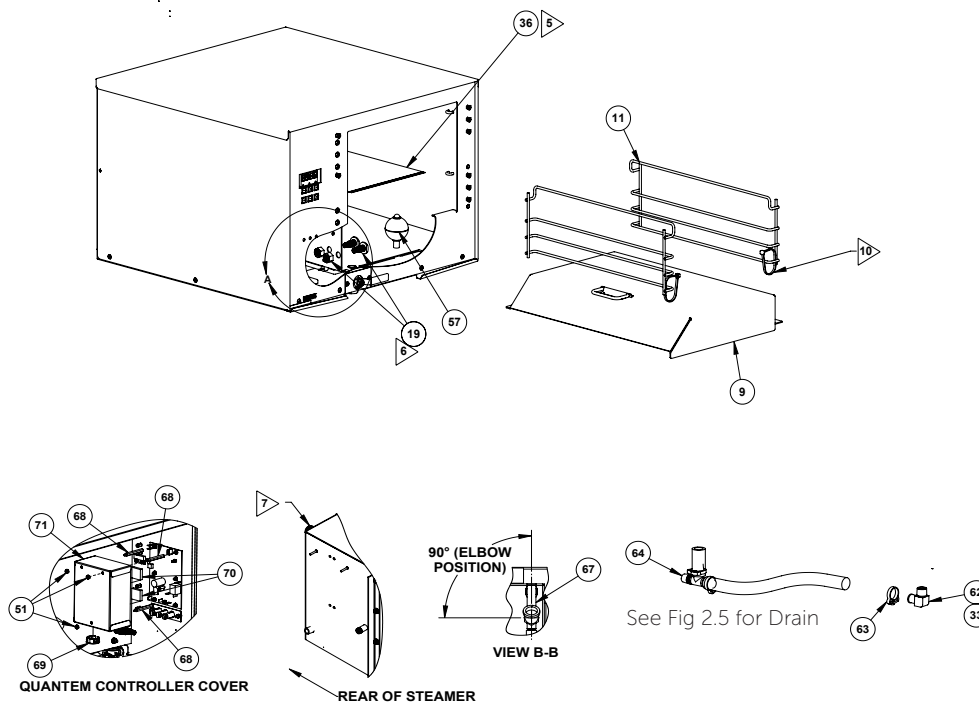
ITEM #	PART NUMBER	DESCRIPTION
#1	AT1A-6589-2	CHAMBER ASSY, 3 PAN EVO FOLDED - ELEC
#2	AT1A-3596-2	PANEL, BOTTOM ASSEMBLY
#3	AT1A-3629-1	ASSEMBLY, TOP PANEL
#4	AT1M-3587-2	PANEL, SIDE
#5	AT1M-6585-1	BACK PANEL, 3 PAN - ELEC EVO
#6	AT1A-3610-1	HEATER MOUNTING BRACKET ASSY
#7	AT1A-3610-2	HEATER MOUNTING BRACKET ASSY
#8	AT1A-3590-1	COMPONENT BRACKET ASSY
#10	AT1M-2573-3	DRIP EDGE
#12	ATOP-2714-5	HOSE CLAMP 1/2" ID
#13	ATOE-3625-1-RXX	CONTROLLER, QUANTEM SERIES 130*
#14	AT1M-3607-1	BRACKET, INDICATOR LAMP
#15	ATOE-1800-2	INDICATOR LAMP RED LED 28V
#16	AT1A-5195-1	PRESSURE SWITCH ASSY
#16-1	ATOE-3617-4	AIR PRESSURE SWITCH
#16-2	ATOP-5188-1	ELBOW, 90 DEG HOSE BARB 1/2" x 1/4"
#17	ATOP-3833-63000	1/2" SILICONE HOSE (SOLD PER FT)
#18	AT0A-3660-1	SENSOR MAGNETIC PROXIMITY ASSEMBLY
#20	AT1M-3348-1	COVER, STEAMER DRAIN
#21	ATOE-3626-1	TEMPERATURE SENSOR, RTD
#23	AT1A-3816-1	BRACKET REAR SUPPORT ASSEMBLY
#24	AT0H-3623-2	SPACER, ROUND CLEAR HOLE
#25	AT1L-3608-1	OVERLAY, STEAMER CONTROL PANEL
#26	AT1L-3658-1	OVERLAY, OPERATING INSTRUCTIONS
#27	AT1L-3369-1	LABEL, SERIAL NUMBER
#28	AT1L-2624-1	LABEL STEAMER LEGS
#29	AT1L-3665-1	LABEL, WATER BACKFLOW
#30	AT1L-3665-2	LABEL, STEAM EXHAUST VENT
#31	AT0H-3623-1	SPACER, ROUND CLEAR HOLE
#32	ATOP-3833-63000	1/2" SILICONE HOSE (SOLD PER FT)

Fig 2.6 E3 Common Components

ITEM #	PART NUMBER	DESCRIPTION
#33	AT0H-3102-1	PIPE THREAD SEALANT (AR)
#34	AT0H-3412-1	THERMAL JOINT COMPOUND
#35	AT0H-3065-3	THREAD LOCKER 248
#37	AT0F-1046-41030	SCREW, #10-24 x 3/8 PHLP TRUSS HEAD
#38	AT0F-2061-41080	SCREW, #10-24 x 1" FLAT HD MACHINE
#39	AT0F-1046-31030	SCREW, #8-32 x 3/8 PHLP TRUSS HEAD
#40	AT0F-2755-41042	SCREW, #10-24UNC X 1/2 PHILIPS HEAD
#41	AT0F-1921-51051	BOLT, 316SS 1/4-20 UNC 2A X 5/8"
#42	AT0F-2666-10000	WASHER, SS #4 INTERNAL TOOTH LOCK
#43	AT0F-1052-41002	WASHER #10 TYPE B PLAIN
#45	AT0F-2666-21000	WASHER, SS #6 EXTERNAL TOOTH LOCK
#47	AT0F-1017-41002	NUT, #10-24UNC HEX SERRATED
#48	AT0F-1017-51002	NUT, 1/4-20UNC HEX SERRATED
#49	AT0F-2778-11002	NUT, #4-40UNC-2B ZINC PLATED HEX SCREW
#50	AT0F-3621-1	NUT, #6-32UNC-2B UNDERSIZE SCREW HEX
#51	AT0F-2691-21002	NUT, #6-32 NYLOC
#53	AT0F-2632-51006	NUT, 1/4-20 LOW CROWN ACORN
#58	AT0A-3519-2	REED SWITCH WIRING HARNESS
#59	AT0P-3495-3	MALE CONNECTOR, 1/4" TUBE TO 1/8" NPTM
#60	AT0P-4293-1	CAP, PIPE
#61	AT1M-3521-2	TRAY, CONDENSATE
#66	AT0P-5194-1	SUPPORT, TUBE
#67	AT1A-5191-1	VENT ASSY, STEAMER
#67-1	AT1A-5093-1	VENT PIPE
#67-2	AT0P-3811-1	ELBOW, 45 DEGREE STREET 3/4 NPT
#67-3	AT0A-4534-1	STEAM VENT EXTENSION (NOT SHOWN)

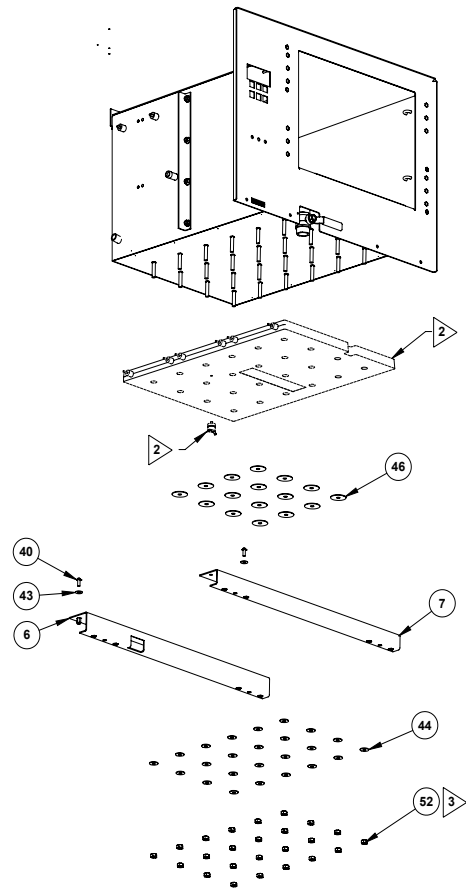
*Contact our Service Parts Department for the current revision of AT0E-3625-1-RXX Controller at 1-800-480-0415 or email parts@accutemp.net

Fig 2.7 E3 Common Components



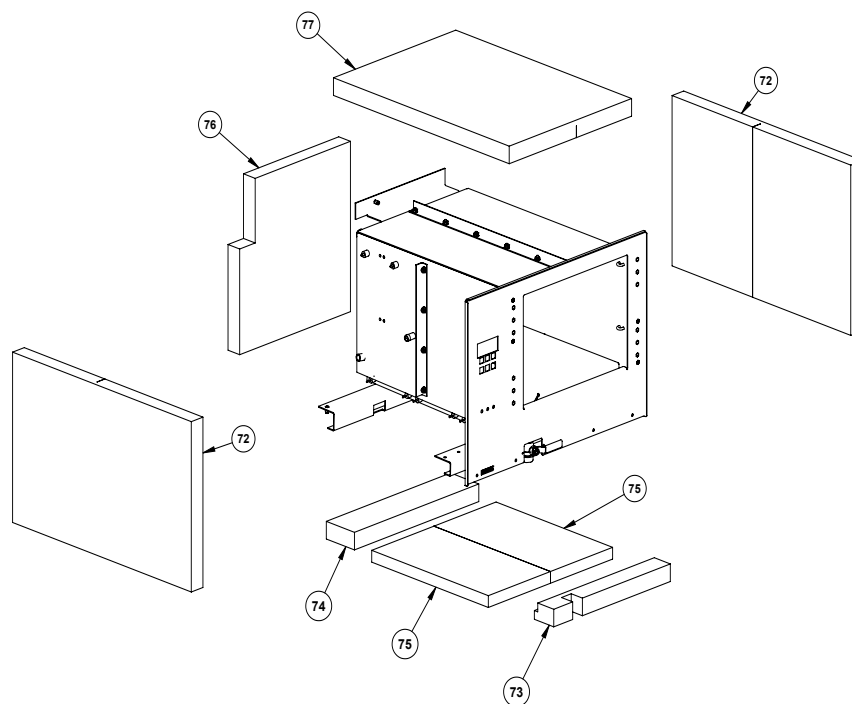
ITEM #	PART NUMBER	DESCRIPTION
#9	AT1A-6599-1	STEAM DIRECTOR WELD ASSEMBLY
#11	AT1A-3601-2	WIRE RACK ASSEMBLY
#19	AT1E-2652-1	PROBE, WATER SENSOR
#36	AT1A-3387-2	OWNER'S MANUAL & REGISTRATION FORM
#57	ATOP-3233-1	FLOAT, ROUND
#62	ATOP-3481-1	ELBOW, 90° NPT TO BEADED HOSE BARB
#63	ATOP-2714-3	HOSE CLAMP 3/4" ID
#64	AT1A-5193-3	DRAIN HOSE ASSY W/ CONDENSATION TRAY
#64-1	AT1A-5193-4	DRAIN HOSE ASSY
#67	AT1A-5191-1	COMPLETE VENT ASSY, STEAMER
#67-1	AT1A-5093-1	VENT ASSY
#67-2	ATOP-3811-1	ELBOW, 45 DEG STEET 3/4 NPT
#68	ATOF-6340-1	STANDOFF, HEX FEMALE TO MALE-6-32
#69	ATOH-6280-1	CORROSION INHIBITOR EMITTER
#70	ATOH-6283-1	CORROSION INHIBITOR EMITTER
#71	AT1A-6282-2	COVER ASSY, QUANTEM BOARD - STD

Fig 2.8 E3 Common Components



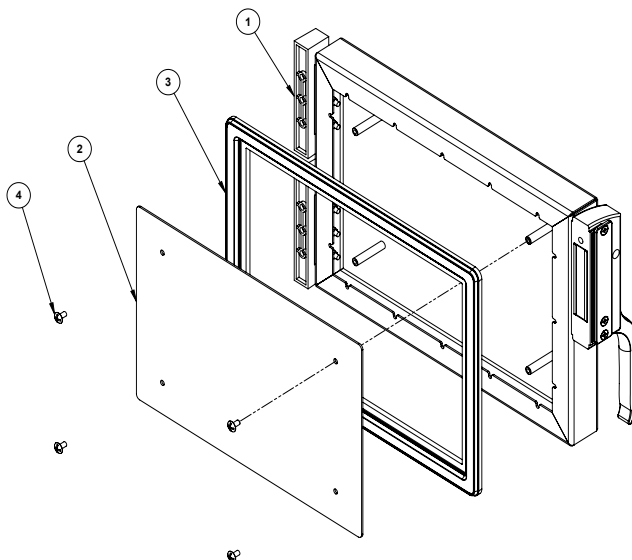
ITEM #	PART NUMBER	DESCRIPTION
#6	AT1A-3610-1	LH HEATER MOUNTING BRACKET ASSY
#7	AT1A-3610-2	RH HEATER MOUNTING BRACKET ASSY
#40	ATOF-2755-41042	SCREW, #10-24UNC X 1/2 PHILIPS HEAD
#43	ATOF-1052-41002	WASHER #10 TYPE B PLAIN
#44	ATOF-2663-4	WASHER, Ø.687 OD BELLEVILLE (QTY: 24)
#46	ATOF-3405-1	WASHER, ROUND FLAT (QTY: 16)
#52	ATOF-3401-1	NUT, SPECIAL LOCKING (QTY: 24)

Fig 2.9 E3 Insulation Components

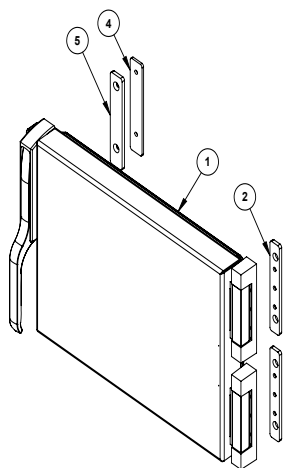


ITEM #	PART NUMBER	DESCRIPTION
#72	AT1I-6586-2	INSULATION, RIGHT SIDE
#73	AT1I-2866-24	INSULATION, BOTTOM FRONT
#74	AT1I-2866-26	INSULATION, BOTTOM BACK
#75	AT1I-2866-64	INSULATION, STEAMER
#76	AT1I-6586-9	INSULATION, BACK WALLS
#77	AT1I-2866-71	INSULATION, TOP

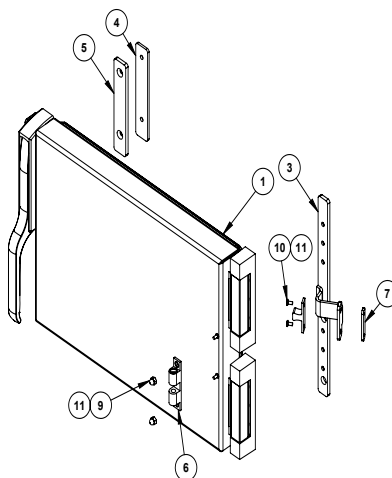
Fig 3.0 E3 Door Components



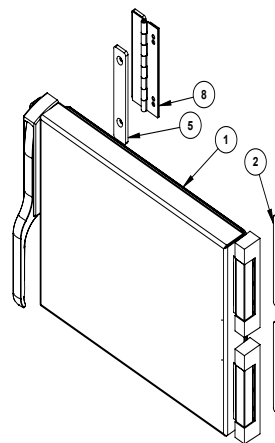
ITEM #	PART NUMBER	DESCRIPTION
#1	AT1A-6613-1	OUTER DOOR ASSY. 3 PAN - LH/RH STD
#1-2	AT1A-6613-2	OUTER DOOR ASSY,3 PAN-RH ONLY HOLD OPEN
#2	AT1M-6578-1	INNER DOOR PANEL, 3 PAN EVO
#3	AT1G-6598-3	DOOR GASKET, 3 PAN EVO
#4	ATOF-1046-40030	SCREW, #10-32 x 3/8" PHLP TRUSS HEAD



AT1A-6614-1
DOOR MODULE, 3 PAN EVOLUTION - LH RH STD



AT1A-6614-2
DOOR MODULE, 3 PAN EVOLUTION - RH ONLY HOLD OPEN



AT1A-6614-3
DOOR MODULE, 3 PAN EVOLUTION - RH ONLY CRACK

ITEM #	PART NUMBER	DESCRIPTION
#1	AT1A-6577-1	DOOR ASSY, 3 PAN EVO - LH/RH STD
#1-2	AT1A-6577-2	DOOR ASSY, 3 PAN EVO - RH ONLY HOLD OPEN
#2	AT1M-6605-1	HINGE SPACER, DOOR - 3 PAN
#3	AT1A-6617-2	HOLD OPEN DOOR BRACKET ASSY
#4	AT1H-3609-J	LATCH SPACER (COMES W/ HANDLE ASSY)
#5	AT1H-3609-H	LATCH STRIKE (COMES W/ HANDLE ASSY)
#6	AT0H-3443-1	CATCH, BALL-STYLE GRAB
#7	AT0M-6619-1	THREADED BACK PLATE, CATCH
#8	AT1A- 3442-1	CRACK OPEN HINGE ASSY
#9	ATOF-2632-21001	NUT, #6-32 LOW CROWN ACORN
#10	ATOF-2061-23050	SCREW, #6-32 x 5/16" FLAT HEAD

Fig 3.1 E3 & E6 Parts Quick Reference

E3 = 3 Pan Evolution Electric Steamer & E6 = 6 Pan Evolution Electric Steamer

AT1G-2633-1	E6 Series Door Gasket
AT1G-6578-3	E3 Series Door Gasket
AT1G-3669-1	E6 Series Panel Distribution Gasket
AT1G-3669-X	E3 Series Panel Distribution Gasket
AT1H-3609-1	E3 & E6 Evolution Door Handle Assy
AT0F-2061-41140	Door Handle Screws (Qty: 3) Standard
AT1H-2058-3	Door Hinges (Brass) Sold as a Pair
AT0A-3660-1	Door Magnetic Proximity Switch
AT0H-3656-1	Threaded Knob for Distribution Panels
AT1A-3601-6	E6 Standard Wire Rack (Sold as Each)
AT1A-3601-2	E3 Standard Wire Rack (Sold as Each)
AT1A-3155-1	Drain Pan w/ Drain Hose Fitting
AT1M-2872-1	Drain Pan Brackets
AT1M-3797-1	Front Drip Pan (Four Screw Holes)
AT0P-3811-1	45 Degree Steam Exhaust Fitting
AT0E-3162-1	Fuse 1/2 AMP 250V Fast Acting
AT0E-2731-2	Fuse 1.25 AMP, 250V
AT0E-2731-1	Fuse 3 AMP 250V
AT1P-2555-32000	1/4" Silicone Hose - Sold Per Foot
AT0P-3833-63000	1/2" Silicone Hose - Sold Per Foot
AT0P-3477-83000	3/4" Blue Drain Hose - Sold Per Foot
AT0P-2714-1	Hose Clamp 1/4"
AT0P-2714-5	Hose Clamp 1/2"
AT0P-2713-3	Hose Clamp 3/4"
AT0P-2713-4	Hose Clamp; Double Teeth 1" (Autofill Only)
AT1A-3030-1	Leg Assembly Kit, Steamer
AT0H-3040-1	Rubber Foot Tip
AT0H-2479-7	Stand Caster Wheel, No-Brake Foot Lever Qty: 2 for Rear Legs
AT0H-2479-8	Stand Caster Wheels w/ Brake Foot Lever Qty: 2 for Front Legs
AT0E-3617-4	Air Pressure Switch EVO
AT0E-3625-1-R12	Quantum Series 130 Controller/Circuit Board (Current Revision)
AT1L-3608-1	Control Panel Overlay
AT0E-3654-2	AC Piezo Electric Alarm (WATER CONTROL BOARD)
AT0E-3654-1	DC Piezo Electric Alarm (CONTROLLER BOARD)
AT1P-2239-1	Ball Valve Handle Assy (Drain Valve)
AT1A-3809-1	Drain Hose Kit w/ Condensation Pan S/N 58718 & Down
AT1A-3809-2	Drain Hose Kit S/N 58718 & Down
AT1A-3809-3	Drain Hose Kit w/ Condensation Pan S/N 58719 & Up
AT1A-3809-4	Drain Hose Kit S/N 58719 & Up
AT1E-2652-1	Probe Water Sensor (Round White Plastic)
AT0E-3230-2	Water Level Circuit Control Board EVO 24V
AT0P-3233-1	Float Ball (56 grams)
AT0A-3519-2	Magnetic Reed Switch w/ Red Terminals

Any questions, please call our Service Parts Department at 1-800-480-0415 or email us at parts@accutemp.net